

BASS CLEF

TONALITY PRACTICE

EXERCISE ONE - SCOTT AGSTER

C



A musical staff in bass clef with a common time signature (C). The staff contains a series of slanted lines representing notes, starting from the first line and moving downwards.

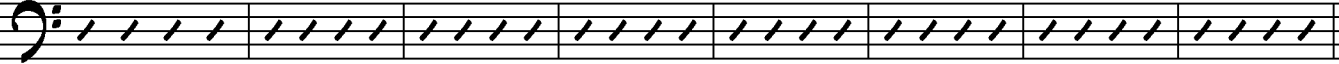
F



A musical staff in bass clef containing a series of slanted lines representing notes, starting from the second line and moving downwards.

9

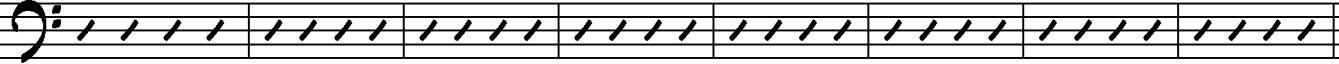
B^b



A musical staff in bass clef containing a series of slanted lines representing notes, starting from the second space and moving downwards.

17

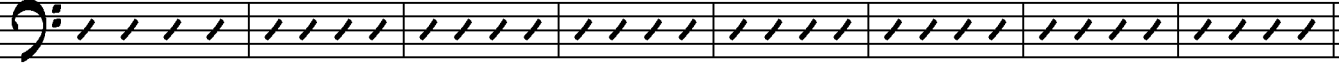
E^b



A musical staff in bass clef containing a series of slanted lines representing notes, starting from the second space and moving downwards.

25

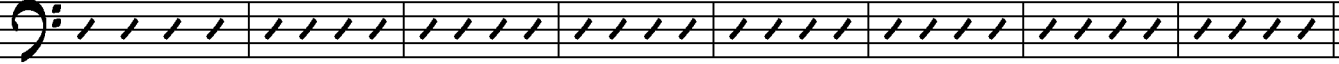
A^b



A musical staff in bass clef containing a series of slanted lines representing notes, starting from the second space and moving downwards.

33

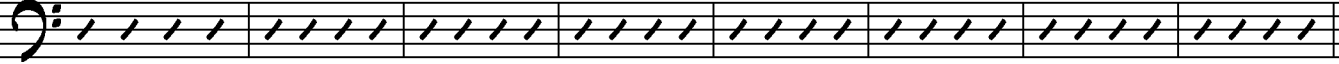
D^b



A musical staff in bass clef containing a series of slanted lines representing notes, starting from the second space and moving downwards.

41

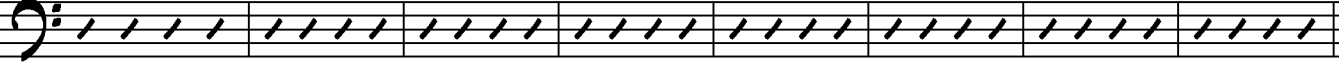
G^b



A musical staff in bass clef containing a series of slanted lines representing notes, starting from the second space and moving downwards.

49

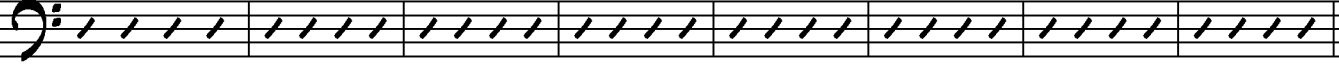
B



A musical staff in bass clef containing a series of slanted lines representing notes, starting from the second space and moving downwards.

57

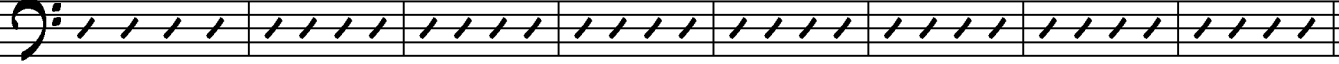
E



A musical staff in bass clef containing a series of slanted lines representing notes, starting from the second space and moving downwards.

65

A



A musical staff in bass clef containing a series of slanted lines representing notes, starting from the second space and moving downwards.

73

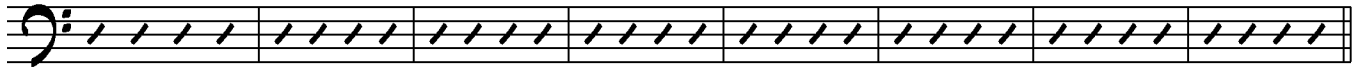


A musical staff in bass clef containing a series of slanted lines representing notes, starting from the second space and moving downwards.

2

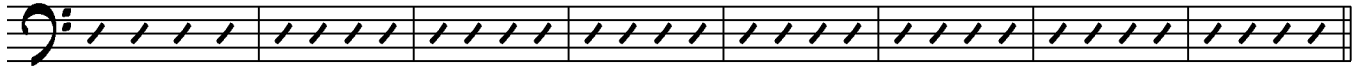
D

TONALITY PRACTICE



81

G



89