

CSP CLASSROOM CLEANING & DISTANCING GUIDELINES



Concordia University, St. Paul is uniquely positioned to provide its students with as close to a traditional learning environment as possible due to its small class sizes and availability of learning spaces on campus.

In order to achieve this goal of continuing to deliver a successful in-person, on-campus learning experience, CSP is asking its instructors and students to follow these simple behaviors and steps to help keep a safe, clean and healthy classroom environment:



1
Faculty sprays surfaces following conclusion of class.



2
Leave surface wet, but do not oversaturate. Surface should remain wet for 1 minute to maximize effectiveness.



3
Incoming students wipe surface to ensure cleanliness, additional spray is available if student deems more is necessary.



4
Students adhere to CDC/MDH guidelines on face coverings.



5
Students will be asked to sit in the same seating arrangement each and every session.

CSP CLASSROOM CLEANING & DISTANCING GUIDELINES



The safety and wellbeing of our students, staff, and faculty is important. Informed by the latest public health guidance, Concordia University, St. Paul continues to take steps to create an innovative in-person, residential experience that will ensure access and quality for our students and advance our academic mission during the COVID-19 era.

- **PHYSICAL DISTANCING ON EXIT & ENTRY**

Please allow students and instructors from the previous session to fully exit the classroom in an orderly fashion before entering.

- **PHYSICAL DISTANCING IN THE CLASSROOM**

All members of a classroom/lab environment will be required to use their personal face coverings.

- **SEATING ARRANGEMENTS**

Students will be seated in assigned seats through the duration of the semester, a consistent measure to aid in contact tracing if necessary.

- **FACE COVERINGS & SANITIZER**

It is the expectation that all students, faculty & staff provide their own face covering and hand sanitizer. While there will be sanitizer stations located at strategic and higher traffic areas & entry points on campus, individuals should have their own sanitizer to be used anytime they come in contact with shared surfaces or supplies or cough/sneeze. Individuals who forget their face covering may stop by the security office for a replacement.

Welcome to **CSP** | To support and care for the health and well-being of our community, CSP follows the CDC safety guidelines.



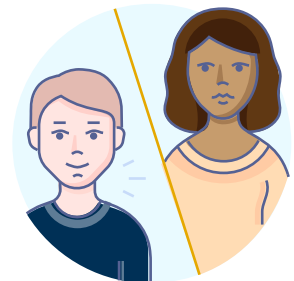
WEAR A MASK



COUGH INTO YOUR ELBOW



WASH HANDS



MAINTAIN PHYSICAL DISTANCE

We are all in this together, if you need help or support in following these guidelines, please do not hesitate to contact us at staysafe@csp.edu